



www.akdenizrack.com
info@akdenizrack.com



Head Office
+90 212 495 79 01
Whatsapp
+90 539 611 38 05



Head Office
İkitelli OSB Demirciler Sitesi G1 Blok
No: 485 Başakşehir / İSTANBUL / Türkiye

Factory
Hürriyet 2.OSB Mah. 10. Cad.
No: 1/0 Merkez / BİLECİK / Türkiye



@akdenizrack



SAVE
Time, Space and Money

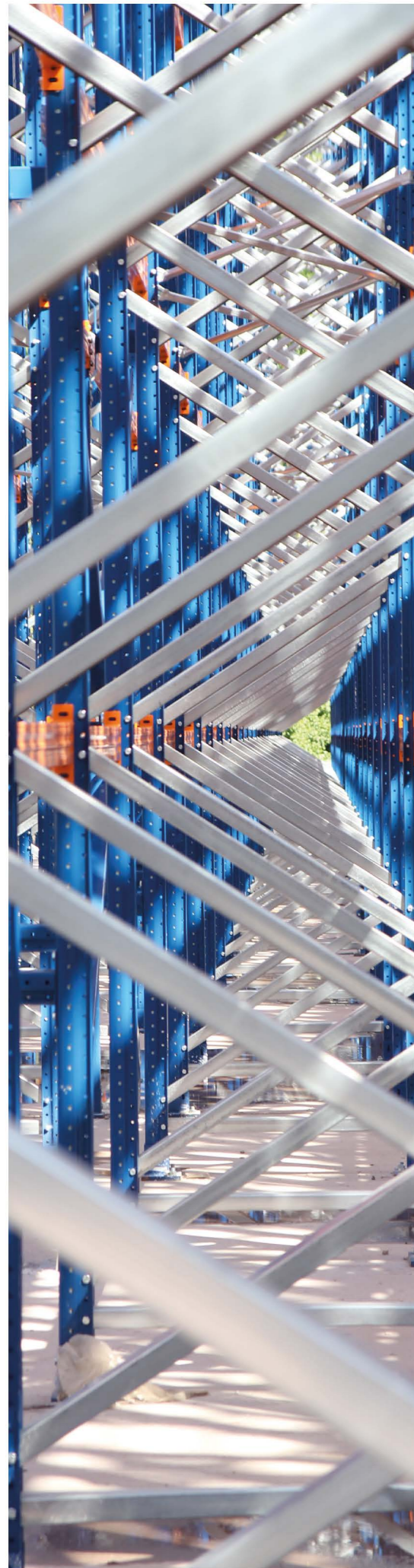


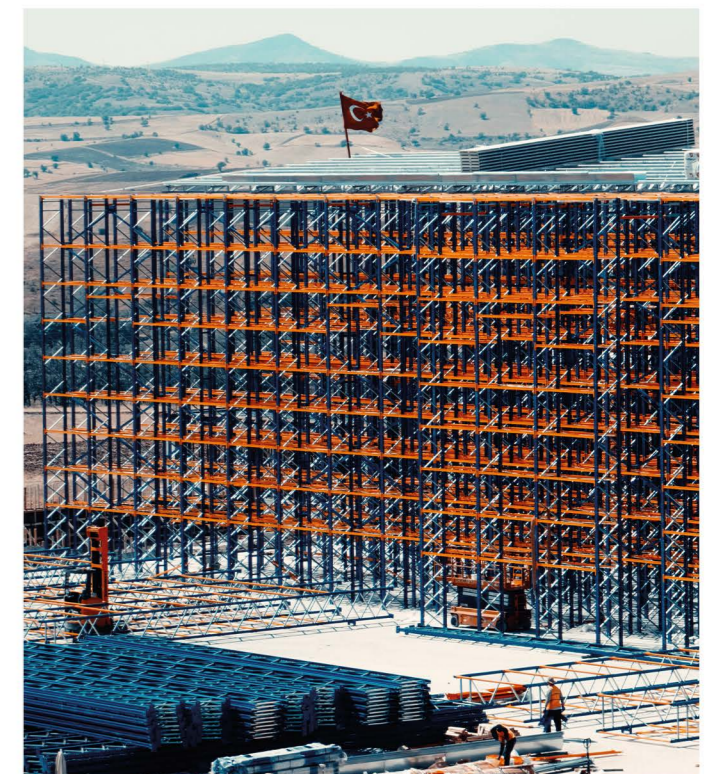
TABLE OF CONTENTS

- 03 ● *Rack Clad Warehouses*
- 10 ● *Pallet Shuttle Systems*
- 12 ● *Shuttle + Rack Clad Warehouse*
- 14 ● *Pallet Racking Systems*
- 16 ● *AS/RS
Automated Storage Systems*
- 18 ● *4-Way Shuttle Systems*
- 20 ● *Steel Construction*
- 21 ● *Narrow Aisle Racking Systems*
- 22 ● *Drive-In Racking Systems*
- 23 ● *Carpet Racking Systems*
- 24 ● *Pallet Flow Racking Systems*
- 25 ● *Mobile Racking Systems*
- 26 ● *Cantilever Racking Systems*
- 27 ● *Mezzanine Racking Systems*
- 28 ● *Light and Medium Duty
Racking Systems*
- 29 ● *Accessories*

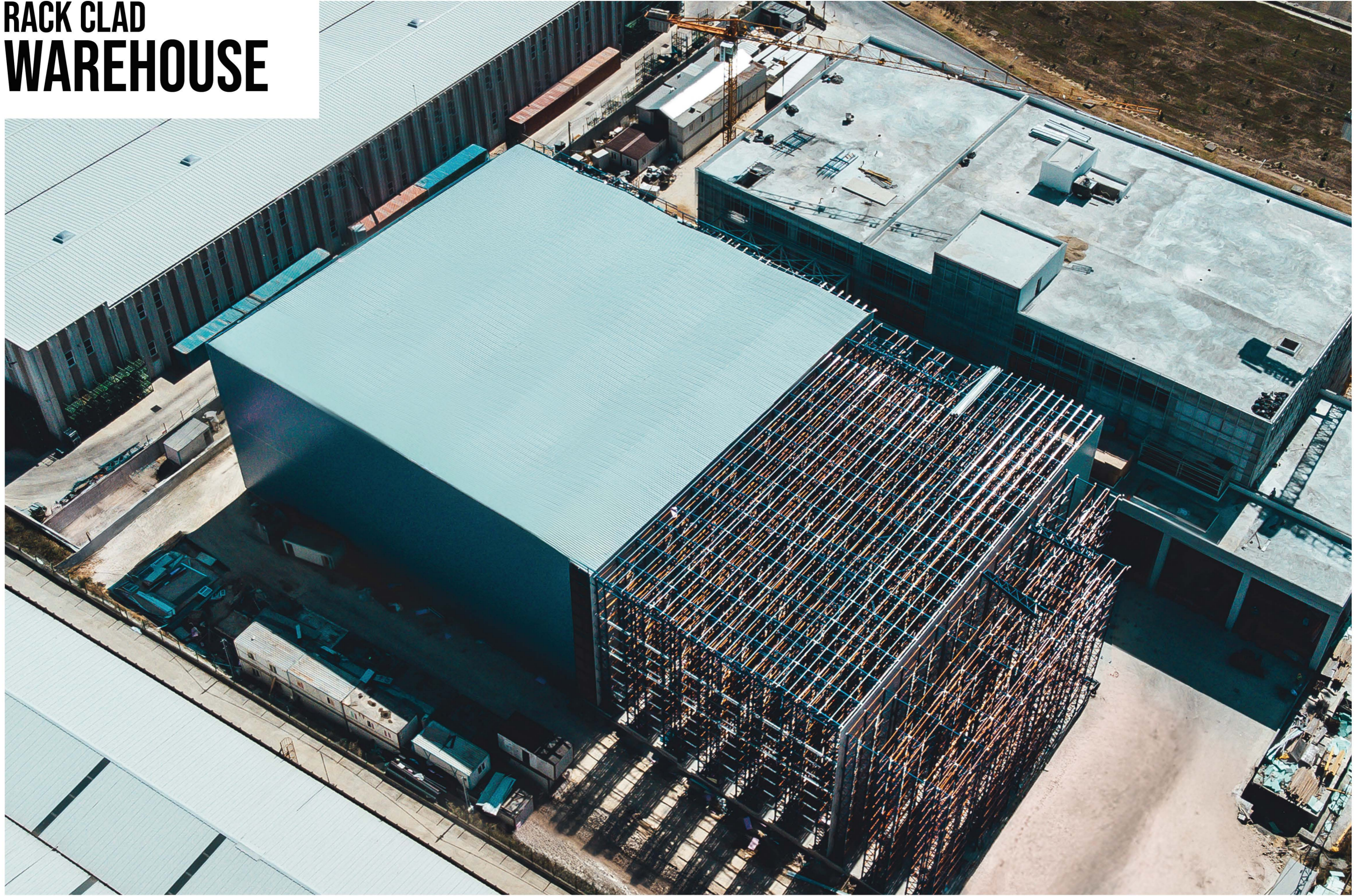


RACK CLAD WAREHOUSES

Rack Clad Warehouses combine the warehouse building and racking system, offering both an economical and practical solution. These systems eliminate the need for a roof and walls, providing several advantages compared to traditional warehouse structures. With high load capacity and modern design, they enhance the efficiency of your business processes.



RACK CLAD WAREHOUSE





Economic Solution

Optimizes your budget by providing a cost advantage of 18% to 30%.



No Construction Required

Eliminates the need for a roof and walls, reducing building costs.



Portable Structure

The modular and demountable design allows easy relocation.



Flexible Design

Aisle distances, ramps, and curves can be customized according to operational needs.



Automation Compatibility

It offers maximum efficiency through integration with AS/RS (automatic loading/unloading) systems.

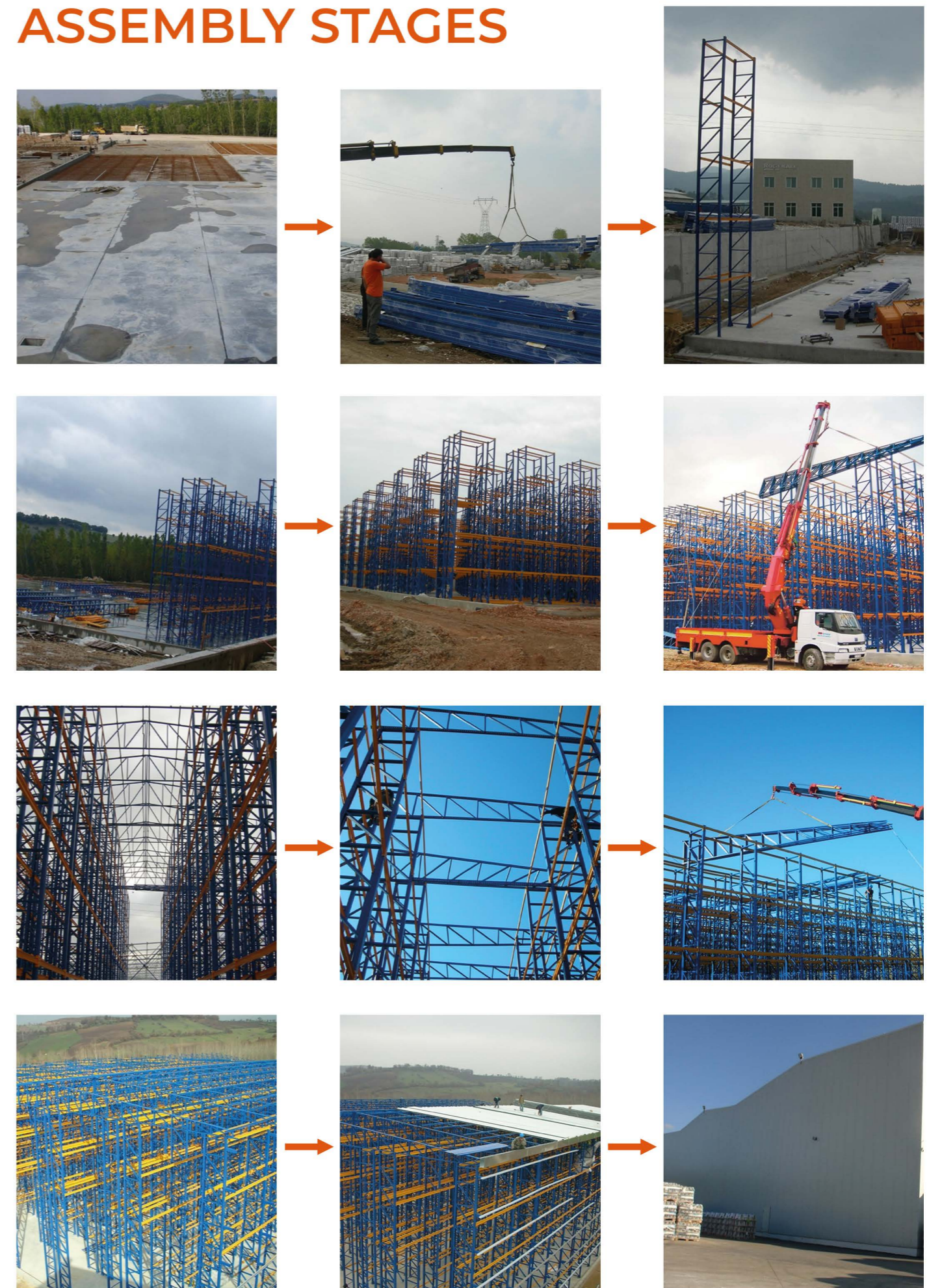


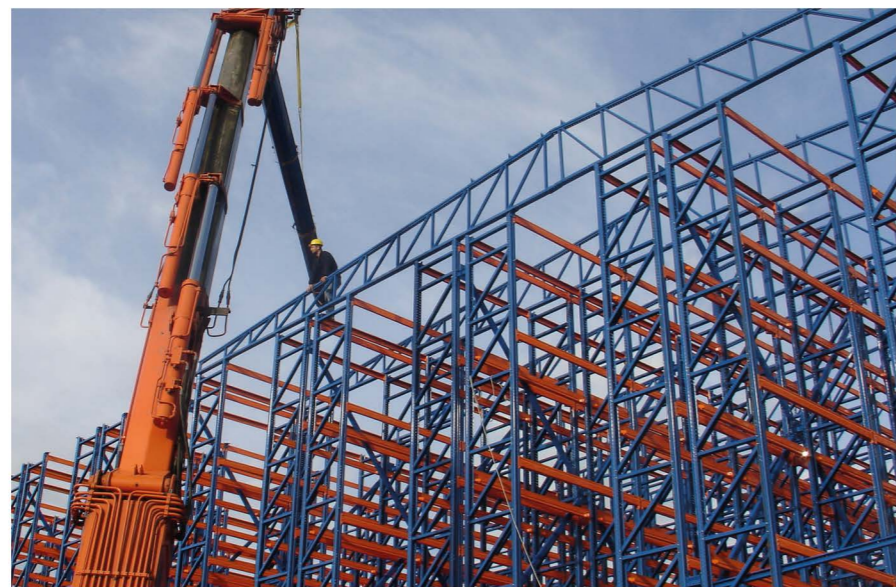
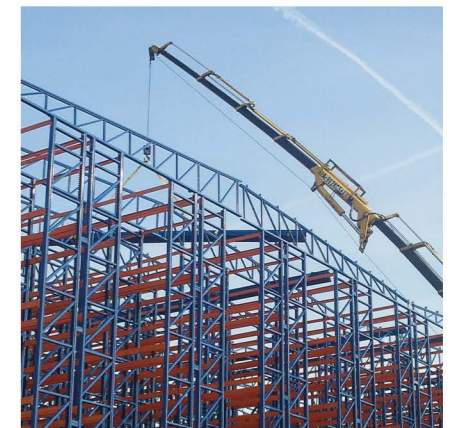
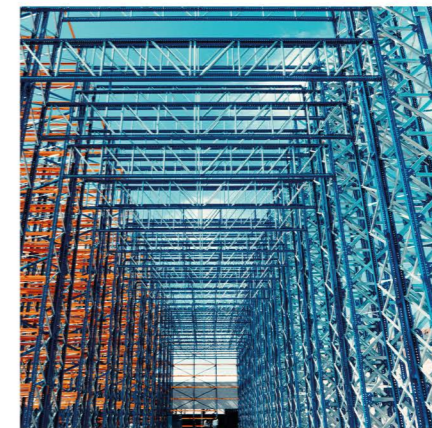
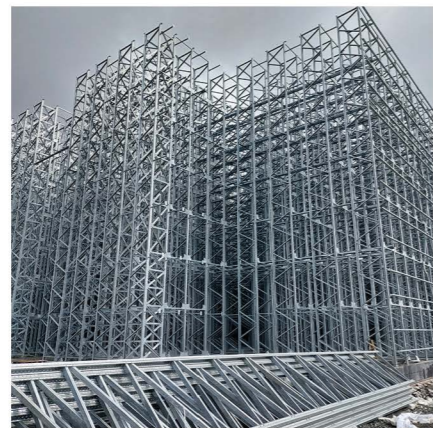
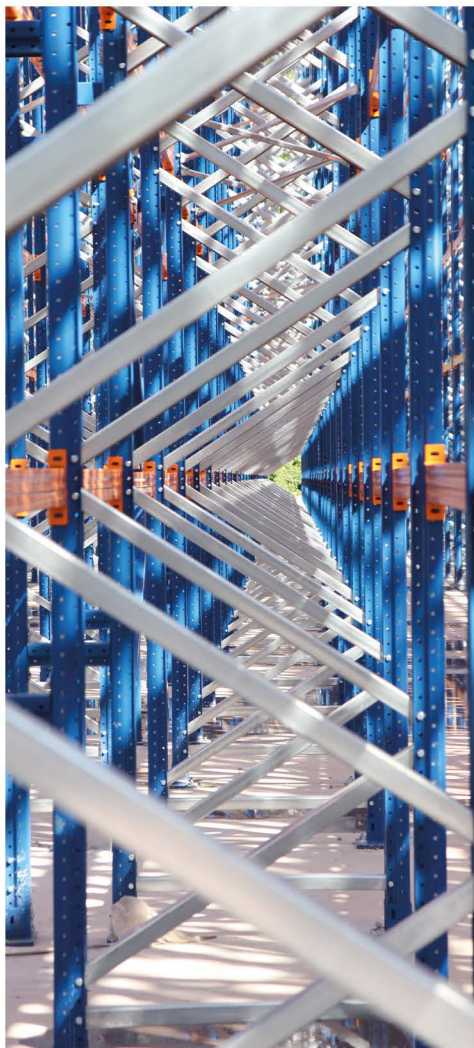
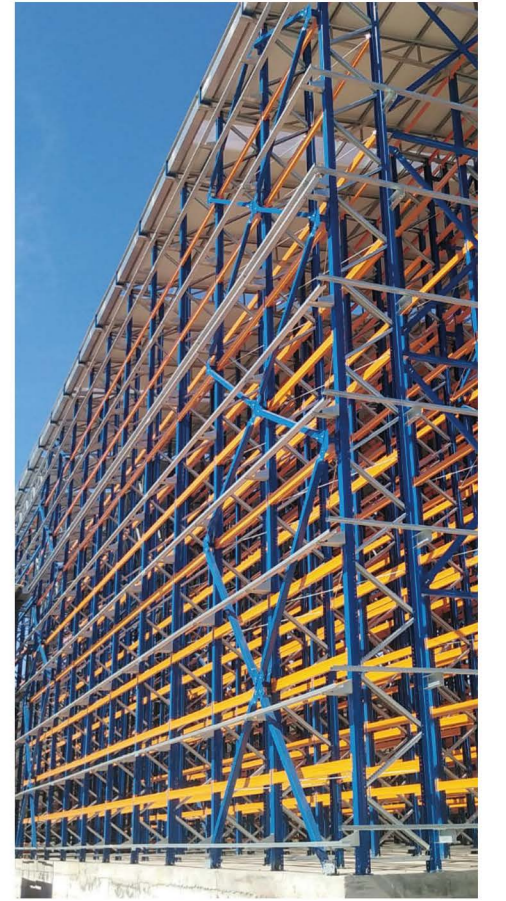
Turnkey Project

Offers a secure and reliable structure with fully planned projects from start to finish.



ASSEMBLY STAGES







PALLET SHUTTLE SYSTEMS

The Pallet Shuttle System allows products to be loaded and unloaded quickly and precisely using an automatic carrier, without the need for forklifts to enter warehouse aisles. The shuttle machine, controlled remotely, can transport pallets of various sizes at a speed of 1 meter per second and carry up to 1500 kg.



Time Saving

Saves operators 50% of time and maximizes warehouse capacity.



Lower Risk

Minimizes operator errors and ensures safe operation in automatic mode.



Cold Storage Compatibility

Operates in cold storage facilities down to -30°C.



Speed and Precision

Ensures quick and precise handling, storage and organization of pallets.



Flexible and Modular

Compatible with different pallet sizes and warehouse management systems.



Cost Advantage

Eliminates the need for special forklifts, ensuring long-term savings.

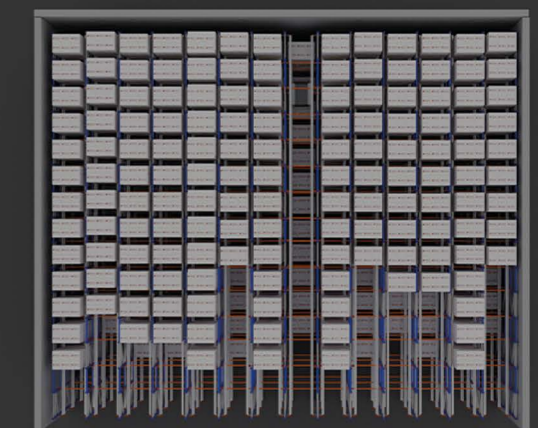


Use your storage space efficiently by eliminating aisles!



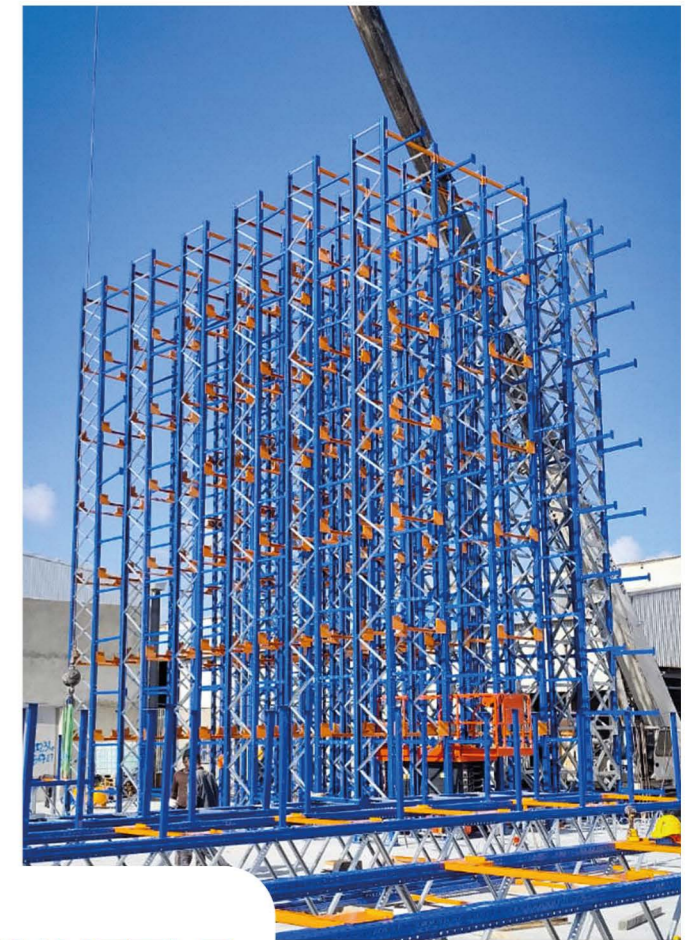
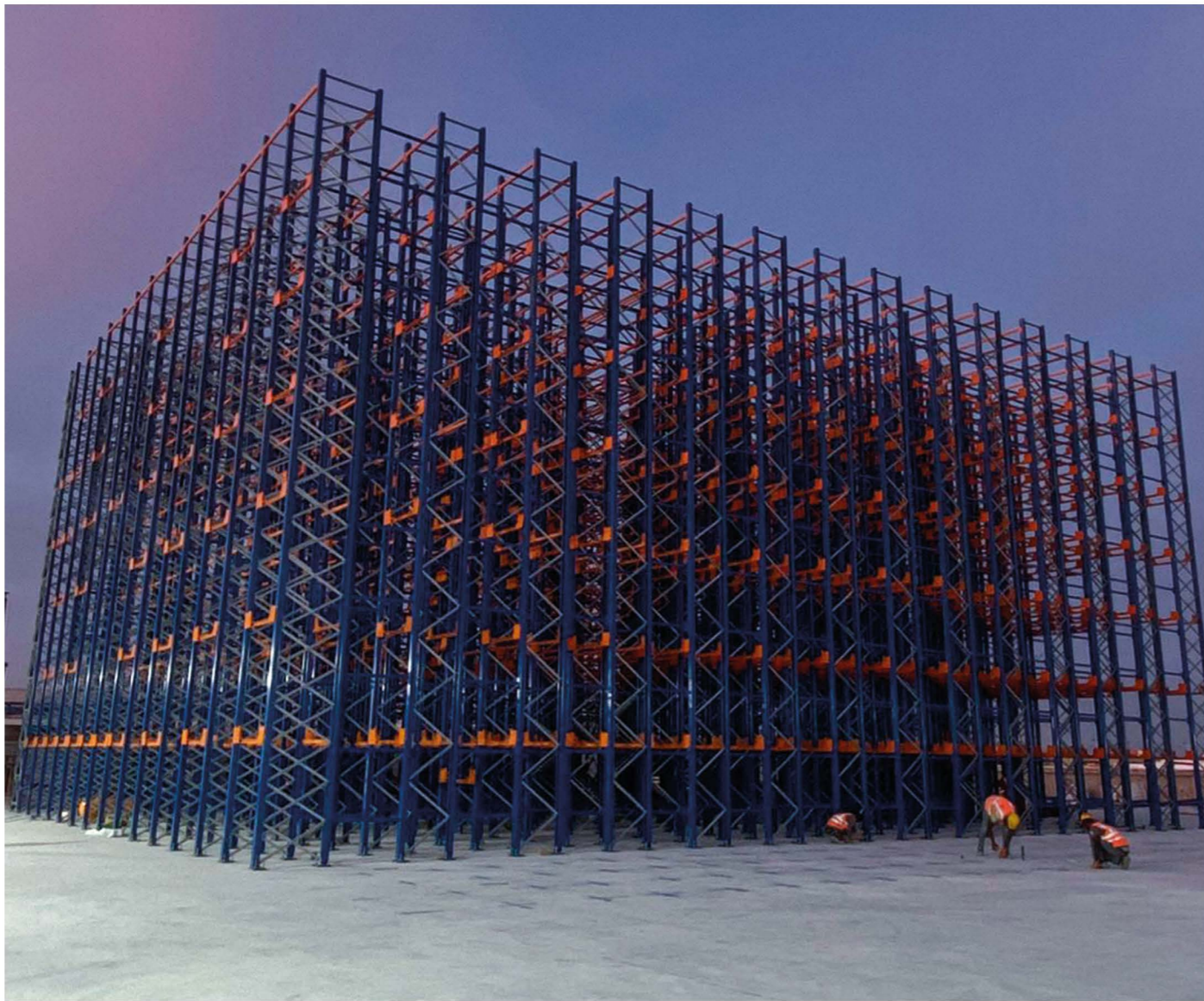
Conventional Pallet Racking Systems

Pallet Capacity : 320



Pallet Shuttle Systems

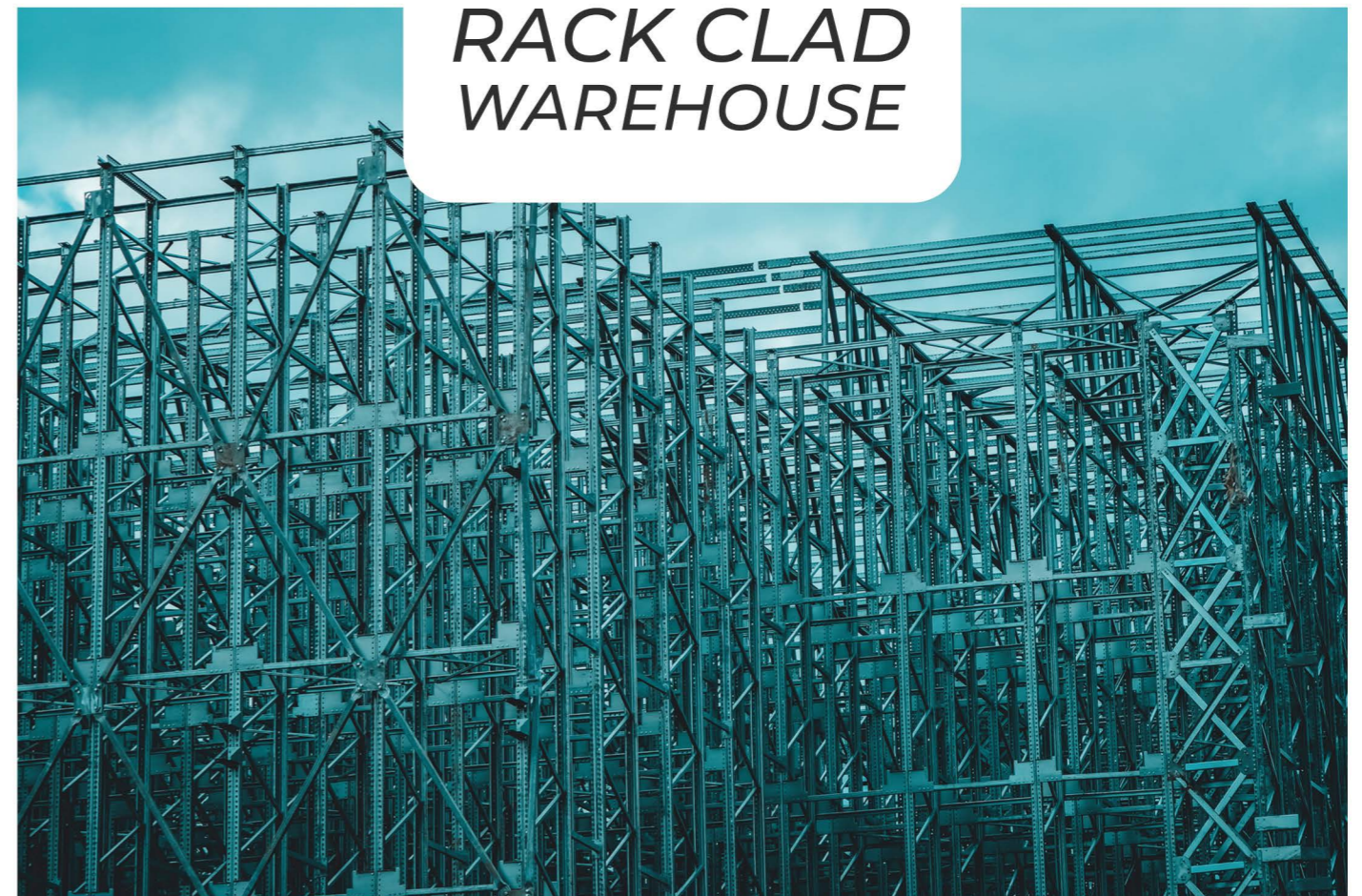
Pallet Capacity : 650



**PALLET SHUTTLE
RACK CLAD
WAREHOUSE**

PALLET SHUTTLE RACK CLAD WAREHOUSE

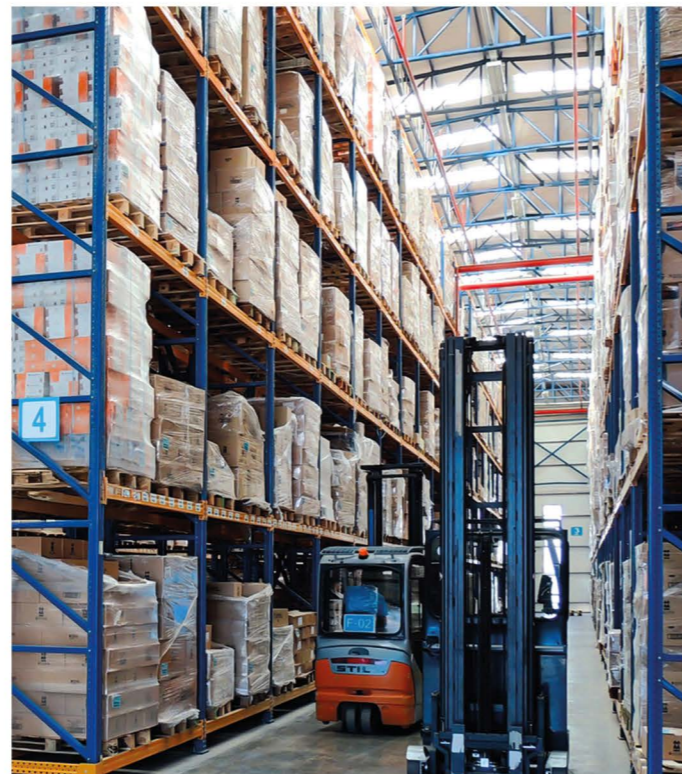
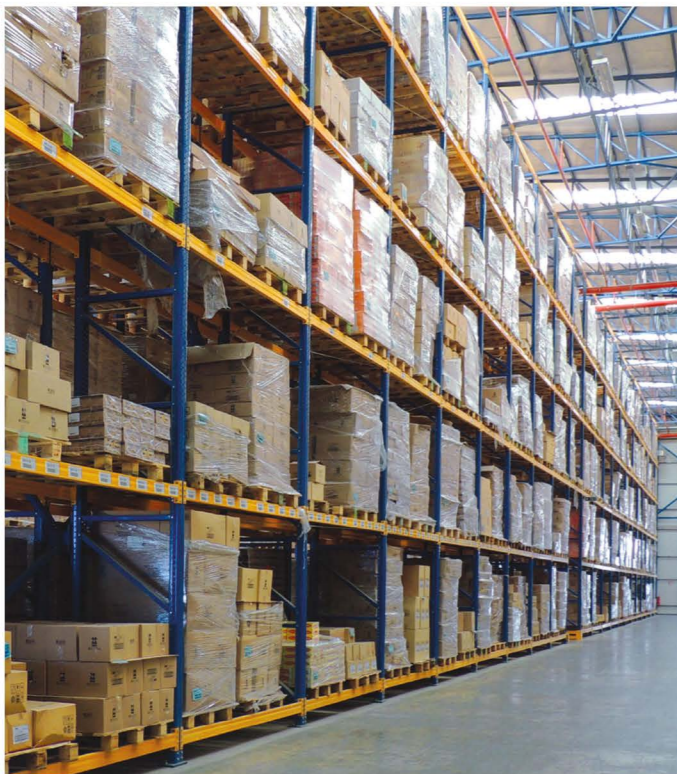
A pallet shuttle rack clad warehouse is an advanced high-density storage solution that integrates automated pallet shuttle racking with a building structure that is directly supported by the racking system itself. This design maximizes vertical and horizontal space utilization, reduces construction costs, and enables efficient automated storage and retrieval of palletized goods.





PALLET RACKING SYSTEMS

Pallet Racking Systems are the most common storage system, offering easy installation and wide usability. It adapts to various needs from small warehouses to complex logistics centers and integrates with other racking systems.



Easy Access

Products can be stored and retrieved quickly and efficiently. Every pallet is easily accessible at all times.



Flexible Design

Beam spacing is adjustable, allowing customization for different sizes.



Durable and Modular

Modular design allows for quick assembly and easy disassembly while ensuring durability.



Wide Application Range

Ideal for warehouses of all sizes and industries.



Compatibility

Compatible with barcode systems and both manual / automatic stacking machines.



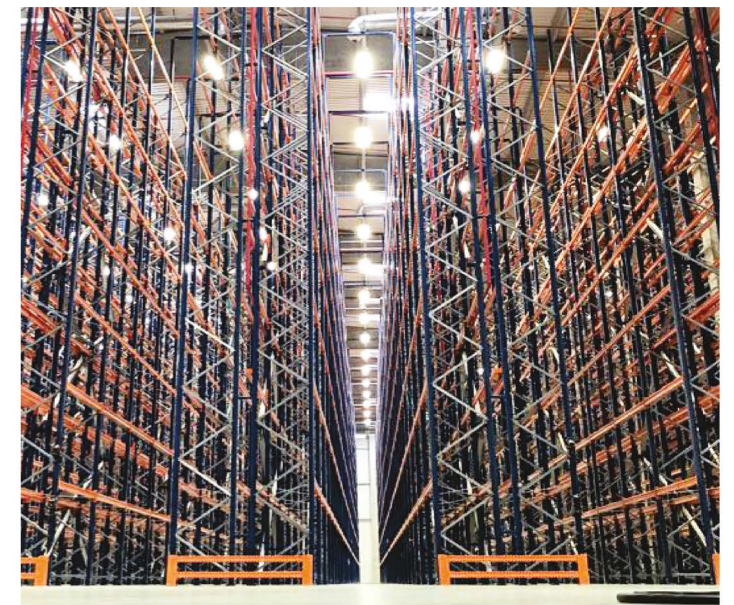
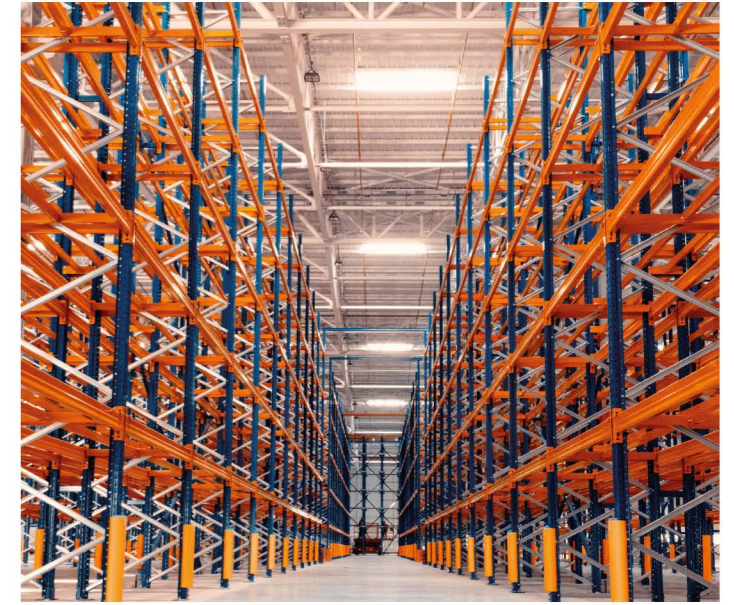
Portability

The modular structure allows easy expansion and relocation.



Versatility

Enables storage of products in boxes, drums, and pallets.



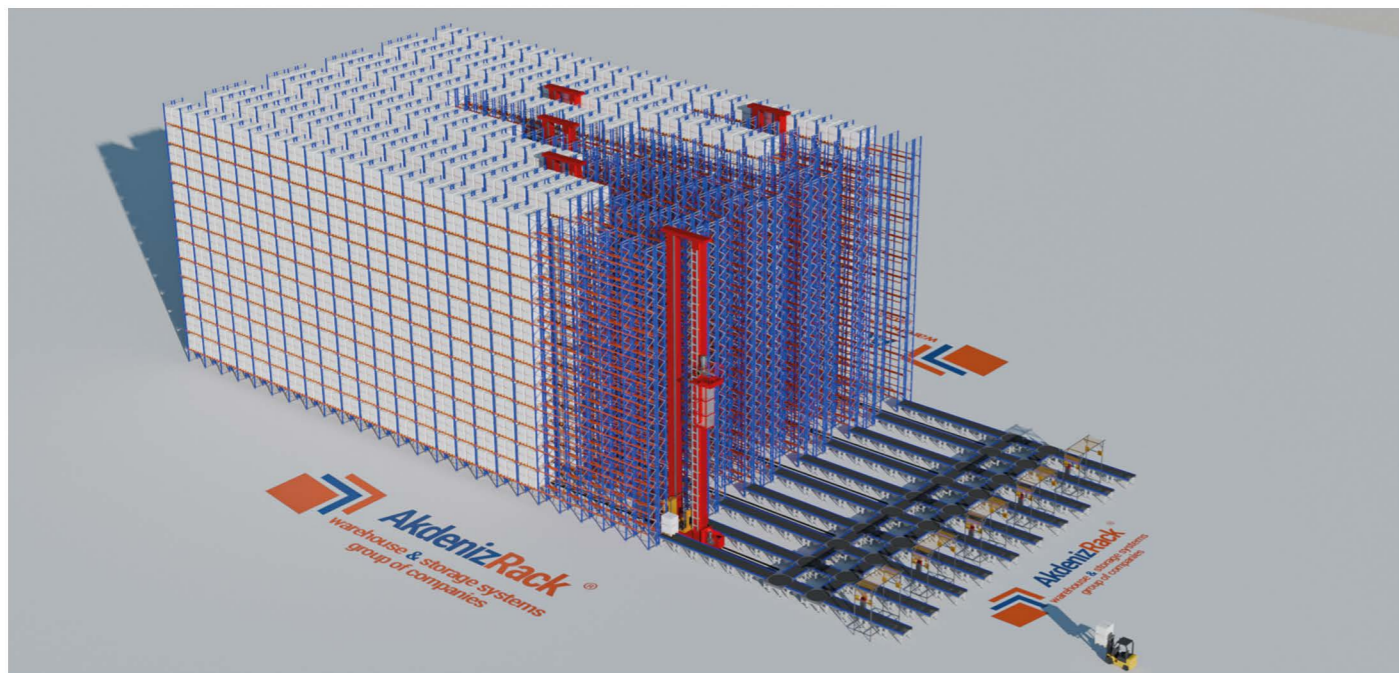
AS/RS

Automated Storage Systems

Automated Storage and Retrieval Systems (AS/RS) are computer-controlled storage solutions for managing inventory tracking and logistics. These systems are widely used in industries such as food, automotive, pharmaceuticals, logistics, air cargo, distribution centers, and home appliances.



The most innovative solution for today's logistics and storage needs.



Space Efficiency

Provides 60-90% savings in warehouse space.



Speed and Accuracy

Reduces loading and unloading errors by accelerating processes.



Low Cost

Reduces labor, equipment, and maintenance costs.



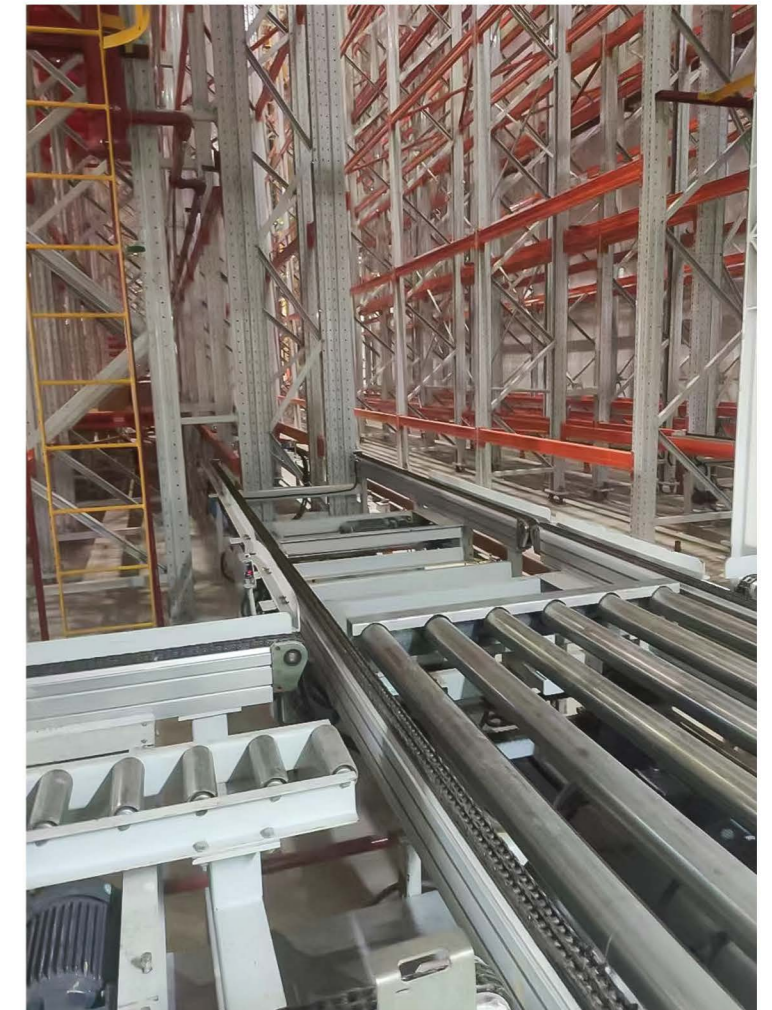
Real-Time Tracking

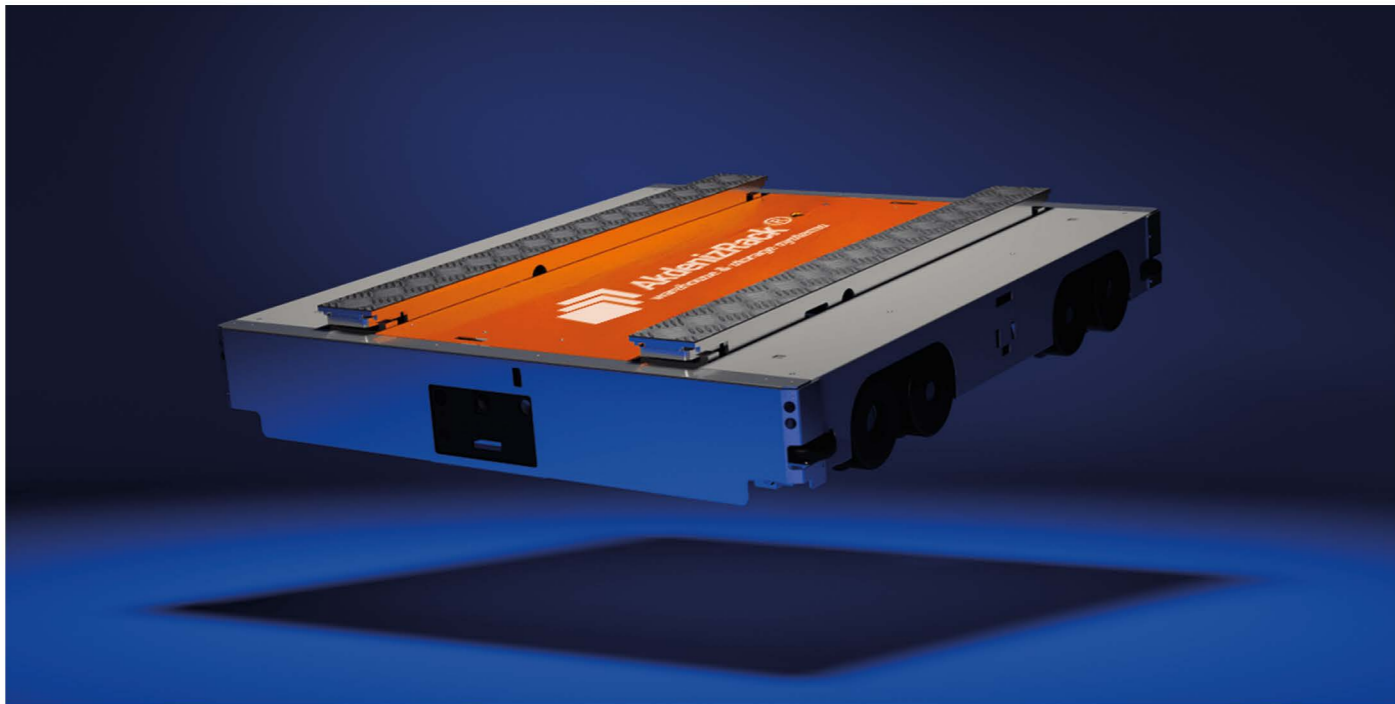
Enables real-time stock monitoring and supports FIFO, LIFO, and FEFO methods.



Operational Efficiency

Optimizes warehouse flow with fully automated and unmanned operation.





4 WAY SHUTTLE SYSTEMS

The 4-Way Shuttle System is an advanced technology solution developed for modern warehouse automation. The shuttle moves in both horizontal and vertical directions, maximizing warehouse efficiency. This system is ideal for fast, flexible, and energy-efficient warehouse management.

4-Way Movement Capability:

Enables unrestricted movement across storage axes, ensuring fast access to racking systems.

High Efficiency:

Increases loading/unloading capacity and reduces operational time.

Modular Design:

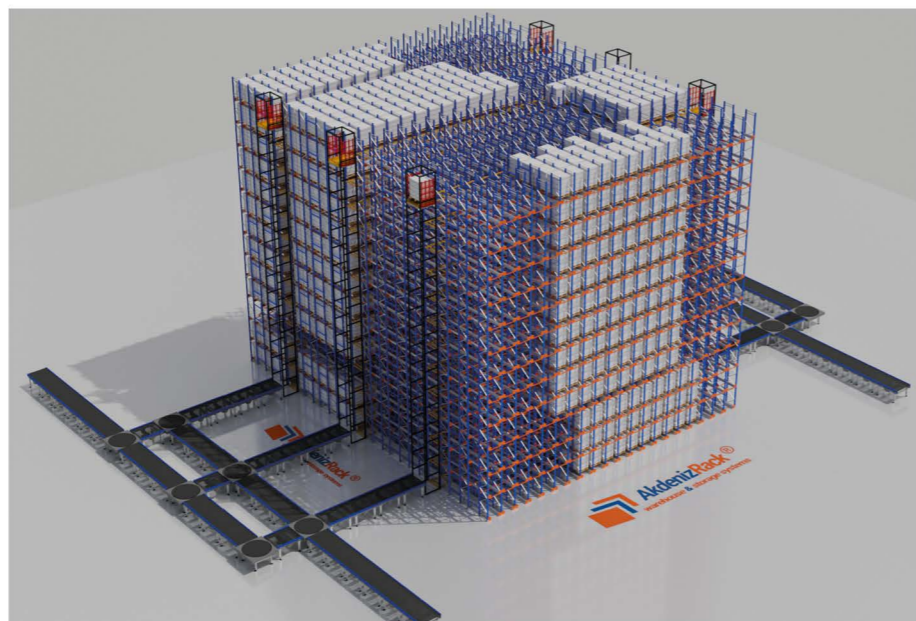
Easily adapts to different warehouse layouts.

Energy Efficiency:

Minimizes costs with low energy consumption.

Safety:

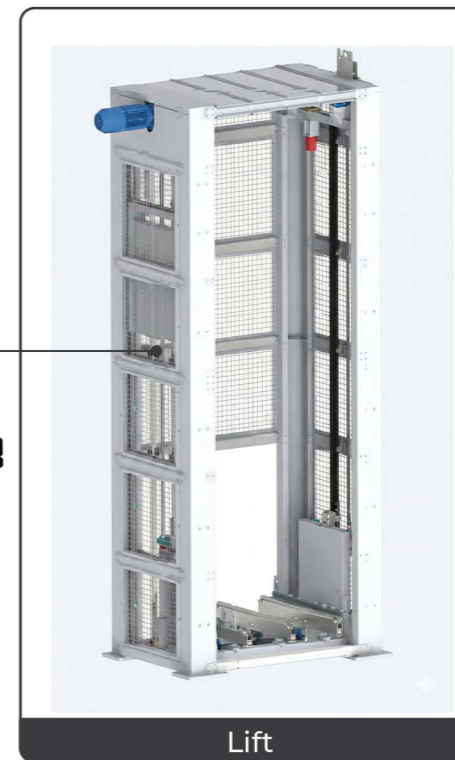
Advanced sensors and control systems prevent collisions and reduce accident risks.



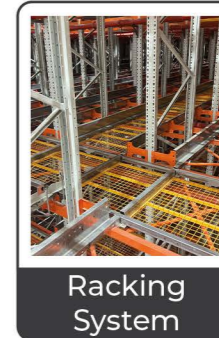
4 WAY SHUTTLE SYSTEM COMPONENTS



4-Way Shuttle



Lift



Racking System



Conveyor System



SOFTWARE (WMS + WCS)

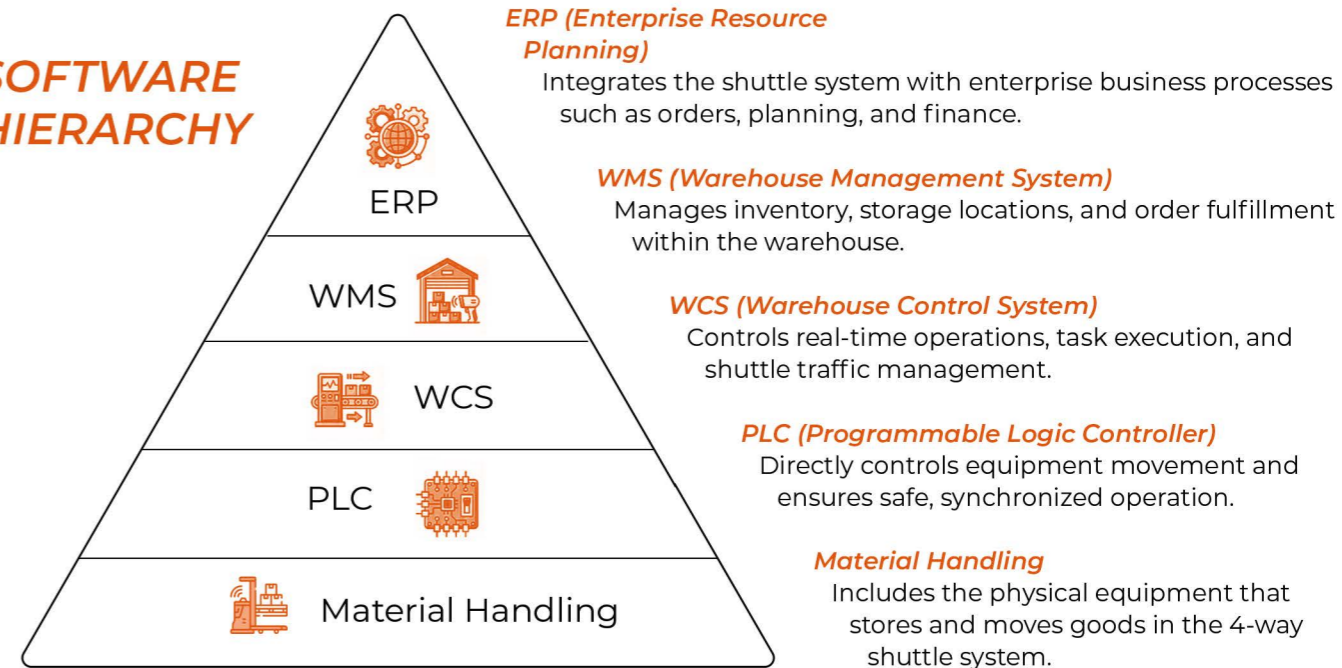
LIFT

Integrated into specific points of the racking system to enable the vertical movement of products and shuttles between levels.

CONVEYORS

Automated lines that transfer goods between storage, shuttles, and workstations, ensuring fast, accurate movement and smooth product flow in a 4-way shuttle system.

SOFTWARE HIERARCHY





STEEL CONSTRUCTION

Steel construction is a modern building solution widely preferred for industrial and commercial projects due to its high strength, durability, and flexibility. It offers safe, cost-effective, and long-lasting structures that meet today's engineering and architectural requirements.



High Strength & Seismic Performance

Fast Production & Installation

Long Service Life & Low Maintenance

Flexible Design & Large Spans

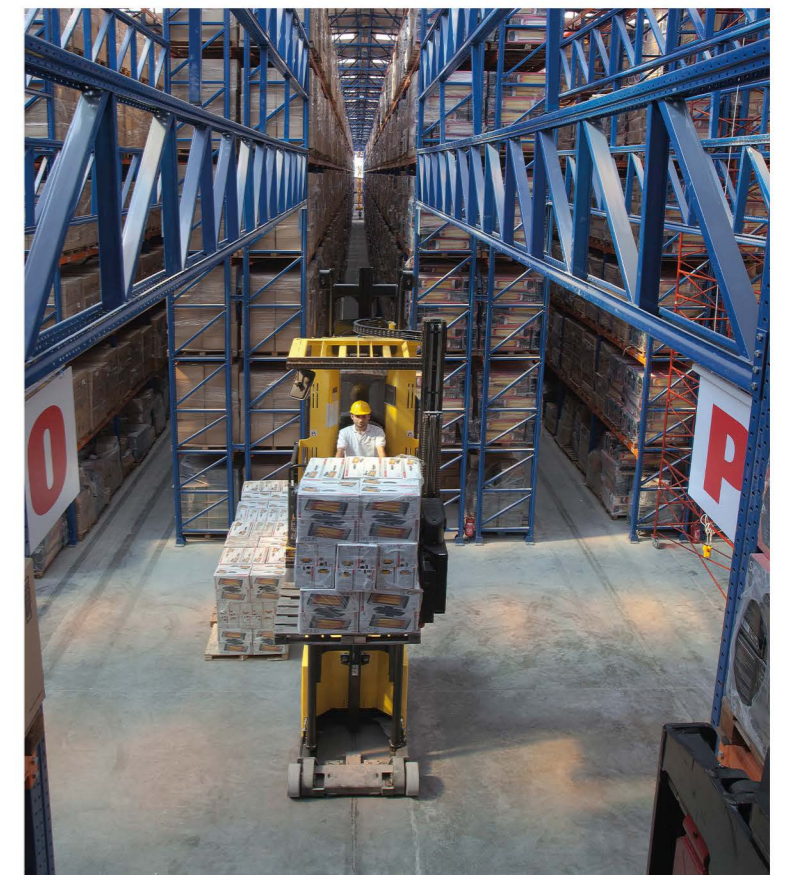
Cost-Effective & Sustainable Solution



NARROW AISLE (VNA) RACKING SYSTEMS

VNA racking systems are an optimized version of standard adjustable pallet racking for narrow aisles. This high-density storage system increases capacity without expanding warehouse space and allows both pallet placement and direct order picking using specialized handling equipment.

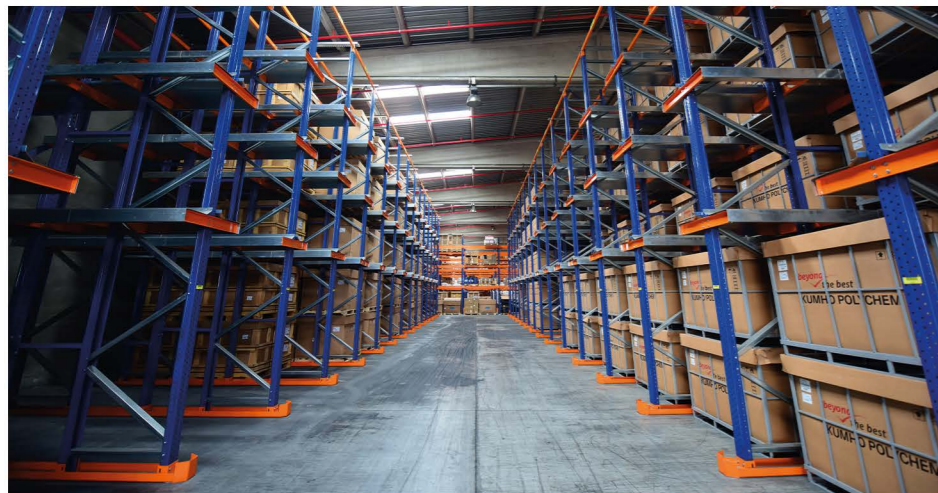
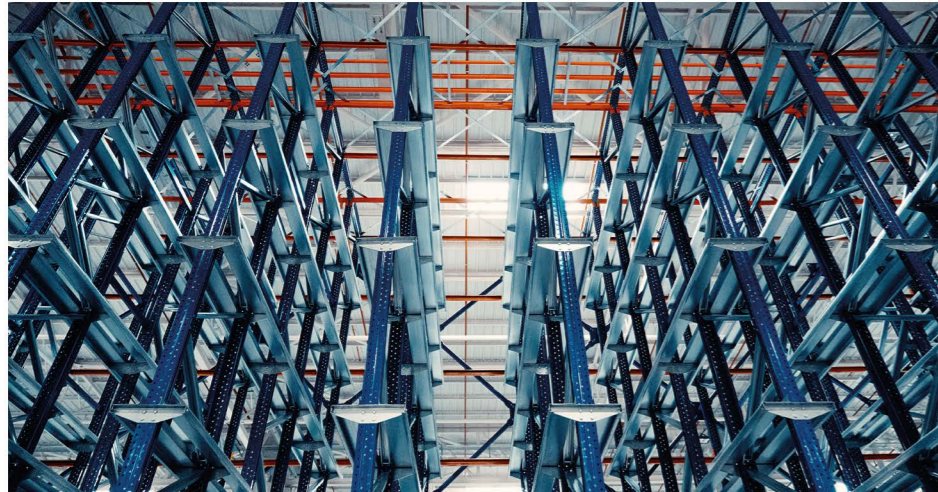
- Direct Access**
Ensures easy access to all unit loads.
- Space Optimization**
Optimizes warehouse layout by narrowing the corridors, saving up to 40% of space.
- Increased Storage Capacity**
Utilizes rack compaction and aisle reduction to maximize space usage.
- High-Density Storage**
Allows up to 18 m of effective height utilization.
- Flexible Structure**
Rack levels can be adjusted or modified as needed.
- Effective Inventory Control**
Facilitates inventory tracking and warehouse organization.
- Wide Compatibility**
Accommodates different product types and volumes.



DRIVE-IN RACKING SYSTEMS



Drive-In Racking Systems allow forklifts to enter the racks directly for deep storage of pallets. Instead of beams, the system uses rails to guide pallets, enabling high-density storage. Operating on FIFO and LIFO principles, it is ideal for storing low-turnover, uniform products.



Maximum Space Utilization
Optimizes over 80% of warehouse space.

Low Cost
Economical assembly and maintenance.

Modular Structure
Easy to install and expandable.

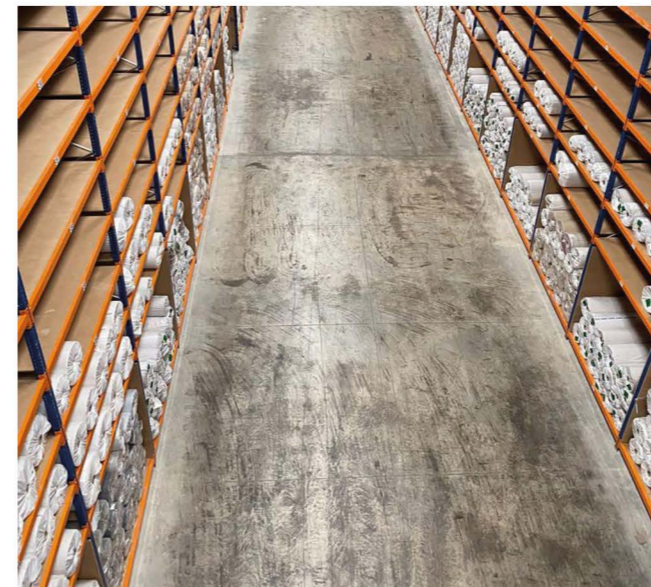
Aisle Reduction
Requires less aisle space compared to conventional racking.

High-Density Storage
Maximizes warehouse volume by utilizing depth efficiently.

Organized Logistics Management
Keeps inventory, traffic, and movement flow under control.

Safety and Accessory Compatibility
Allows for additional safety accessories to enhance protection.



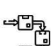



CARPET RACKING SYSTEMS

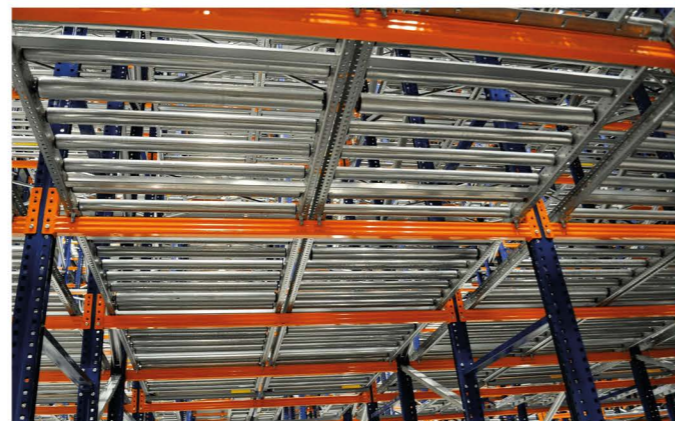
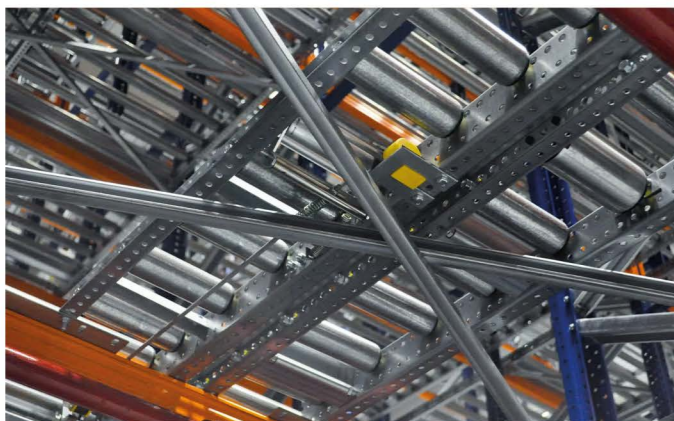




PALLET FLOW RACKING SYSTEMS

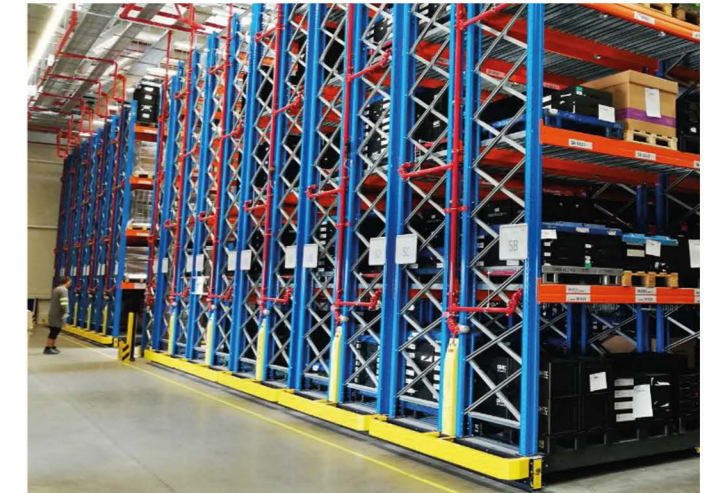
Pallet Flow racking systems are a dynamic storage solution that enables palletized products to slide toward the exit direction due to the gravitational force of a 4% inclined roller track. Operating on the FIFO (First In, First Out) principle, this energy-free system optimizes stock management and facilitates fast order preparation.

-  **Fast Order Preparation:** Shortens travel distances and speeds up the shipping process.
-  **Space and Volume Optimization:** Racks are stacked vertically and placed side by side to maximize warehouse capacity.
-  **FIFO Principle:** Prevents products from becoming outdated, making it ideal for short shelf-life items.
-  **Energy Savings:** Gravity-driven system requires no additional energy for material flow.
-  **Separated Loading and Unloading Areas:** Enhances operational efficiency and ensures continuous order preparation.
-  **Flexible Usage:** Rollers can be adapted to different material structures and braking mechanisms.



MOBILE RACKING SYSTEMS

Mobile racking systems consist of conventional pallet racks mounted on moving bases, providing a high-density and flexible storage solution. Aisles open only when needed, maximizing space utilization. Suitable for storing large and heavy loads, particularly effective in cold storage environments.



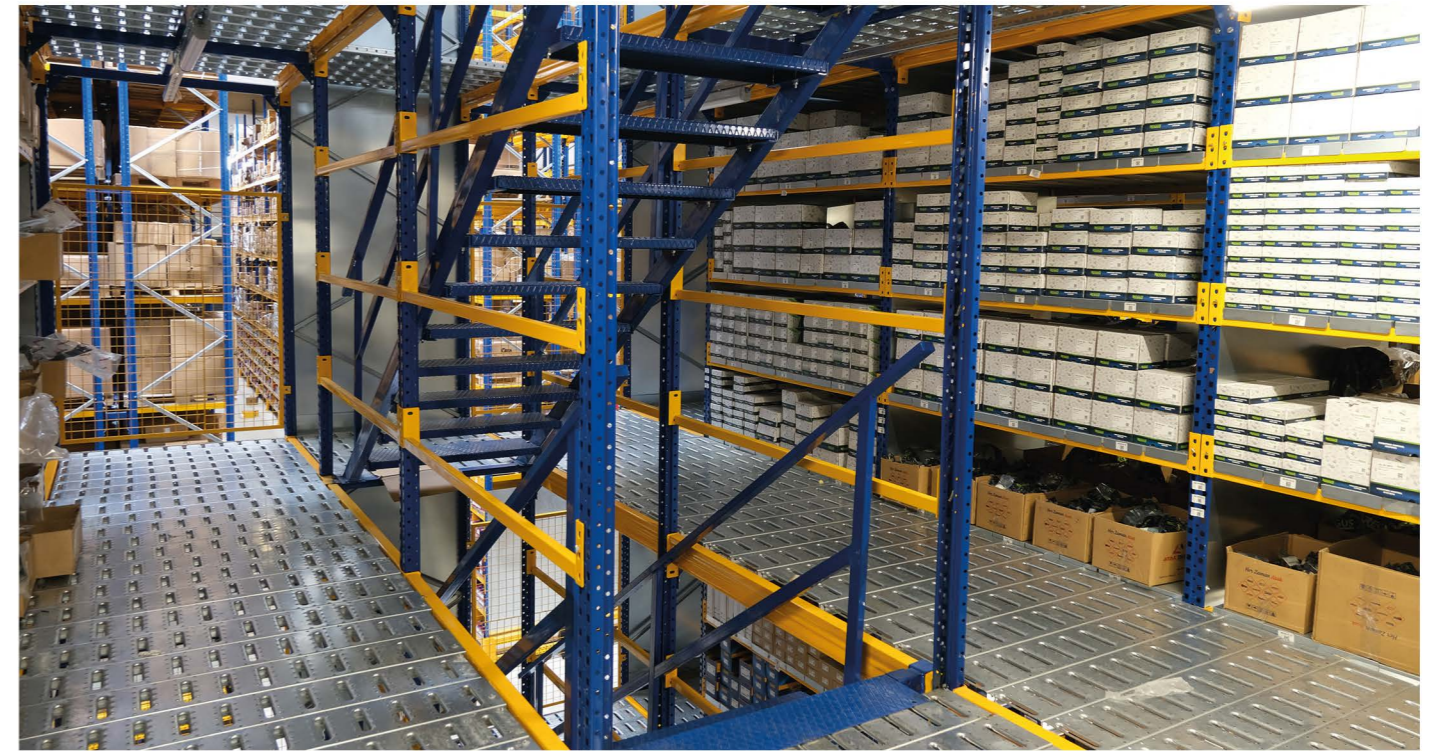
- ✓ Provides space optimization with up to 90% increase in storage capacity.
- ✓ Aisle Savings: The ability to open and close aisles as needed makes warehouse space more efficient.
- ✓ Energy Efficiency: Reduces heating, cooling, and lighting costs.
- ✓ Modular Design: Easily adaptable to different areas and needs.
- ✓ Cold Chain Storage Compatibility: Operates effectively in low-temperature environments.
- ✓ High Workflow Efficiency: Saves time and simplifies operational processes.



CANTILEVER RACKING SYSTEMS

Cantilever racking systems ensure the orderly and efficient storage of profiles, pipes, plastics, and long materials. Its modular structure allows length adjustments and can be used as single or double-sided.

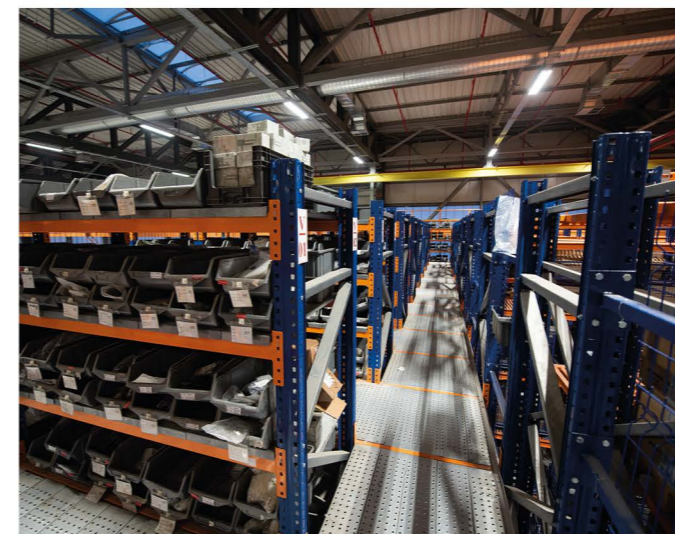
- ✓ Ideal for long and bulky materials
- ✓ No limitations on size and load capacity
- ✓ Easy assembly and dismantling with bolt system
- ✓ Portable and provides flexible use
- ✓ Compatible with forklifts and side-loading equipment, effective even in narrow aisles



MEZZANINE RACKING SYSTEMS

Mezzanine racking systems create additional floors by efficiently utilizing warehouse height. The system provides a secure structure by supporting both the racks and the platforms. Manually loaded areas ensure easy product access and improve warehouse organization.

- ✓ Maximizes warehouse height for additional storage space
- ✓ Modular Structure: Additional floors can be added to increase storage capacity.
- ✓ Simplifies product grouping and order preparation.
- ✓ Walking platforms allow manual pallet jack usage.
- ✓ Fully dismantlable and portable to different locations





LIGHT AND MEDIUM-DUTY RACKING SYSTEMS

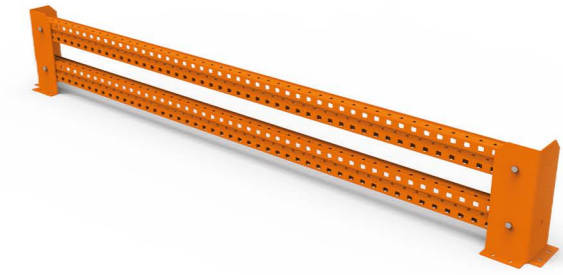
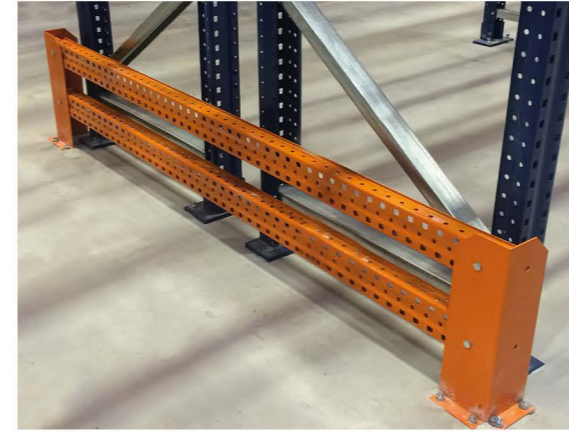
Light and medium-duty racking systems offer a practical solution for the organized and safe storage of small to medium-sized items. These racks are commonly used in supermarkets, archives, and various storage facilities and can be integrated with other storage systems.



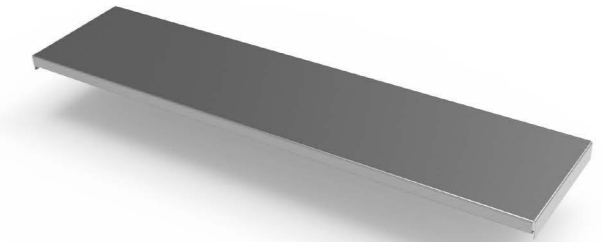
- ✓ It provides ideal and organized storage for small quantities of products.
- ✓ Durable Structure: The non-deformable rack design protects products from compression and damage.
- ✓ Easy assembly and disassembly: The modular structure allows quick setup.
- ✓ Facilitates quick order preparation and easy access in any environment.
- ✓ It offers long life with electrostatic powder coating.
- ✓ High strength can be achieved thanks to the beam supported design.

ACCESSORIES

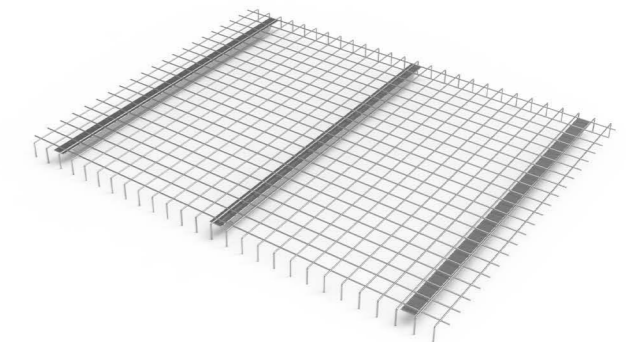
Barrier Frame Protection



Flat Shelf Panel



Wire Mesh

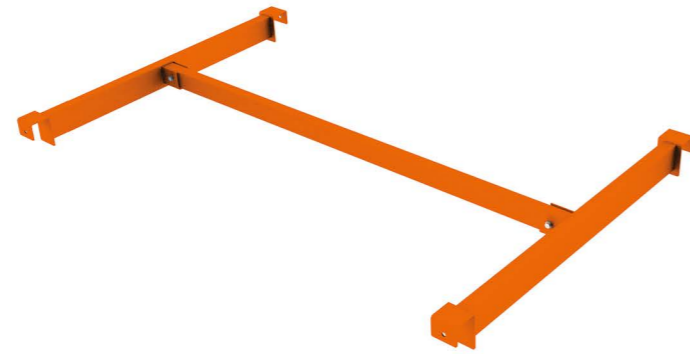
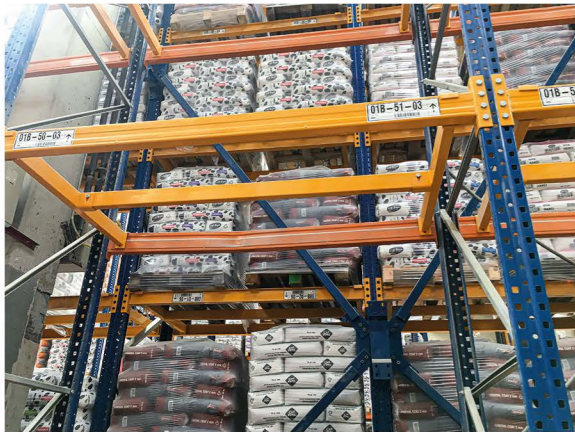


ACCESSORIES

Seismic Cross Bracing



H-Type Pallet Support



U-Type Frame Protection

